



# Great Peninsula Conservancy

Spring 2014

*Protecting our lands and waters for generations to come*



*Port Gamble Bay Shoreline Conserved – page 3*

# December Gifts

December is always a busy time at Great Peninsula Conservancy. Many of our members choose to make a generous yearend gift to GPC. You are inspired by looming deadlines for GPC's conservation projects, the opportunity of having your gift matched by GPC's annual Great Peninsula Challenge, the holiday season, and the pending tax cutoff for charitable deductions. Great Peninsula Conservancy members were especially generous in December 2013. Thank you!

Not only did GPC receive exceptional cash gifts to advance our conservation mission, but two families/individuals donated precious conservation lands to GPC. Brothers Ken, Joel and Karl Kawahara donated land they recently inherited in honor of their parents, Hitoshi and Alice. The 3.35 acres of riparian forest and tidelands are at the head of Miller Bay near Kingston, and will complement GPC's Grovers Creek conservation

project (see pages 4-5). The Kawaharas also made a generous cash donation to GPC's Stewardship, Defense and Monitoring Fund to strengthen GPC's ability to care for their land in perpetuity.

At the other end of Great Peninsula Conservancy's geography, a really wonderful woman who cares deeply about the environment donated 46.1 acres of maritime forest at the head of Key Peninsula's Filucy Bay near Longbranch. The donor purchased the property two years ago when she learned it was slated to be logged, and then decided to entrust GPC with its permanent protection. This is an awesome property with big trees, a creek and a tidal marsh on a secluded, pristine cove. The location ranked in the top 3% of shoreline stretches critical to salmon in a recent assessment of the Key Peninsula, Gig Harbor and Islands region of South Sound. The forest and tidelands also provide habitat for many birds and other wildlife.

I know GPC's many members join me in thanking the Kawahara family and our anonymous donor for these visionary land gifts, which will be cherished by present and future generations as keystone properties in restoring Puget Sound, one estuary at a time. Extraordinary gifts of cash and land made December truly a time of thanks at GPC, and set the stage for great things to come in 2014.

Sandra Staples-Bortner  
Executive Director

## Great Peninsula Conservancy

*Protecting forever the natural habitats, rural landscapes, and open spaces of the Great Peninsula.*

423 Pacific Ave, Suite 401  
Bremerton, WA 98337  
360-373-3500  
info@greatpeninsula.org  
www.greatpeninsula.org

Editor – Sandra Staples-Bortner • Managing Editor – Kate Kuhlman  
Printed on FSC paper by Blue Sky Printing, Poulsbo, WA



### Staff

Sandra Staples-Bortner, Executive Director • Kate Kuhlman, Operations Director  
Scott Pascoe, Conservation Director • Erik Pedersen, Conservation Assistant  
Mary Zabinski, Development Coordinator

### Board of Directors

Sidnie Shaffer, President, Bremerton, 2014  
Richard D'Archangel, Vice President, Suquamish, 2016  
Mark Bubenik, Secretary, Gig Harbor, 2015  
David De Bruyn, Treasurer, Kingston, 2014  
James DePew, Past President, Gig Harbor, 2014

Peter Namtvedt Best, Bainbridge Island, 2015 • Gary Cunningham, Seabeck, 2016  
Jean Farmer, Allyn, 2015 • Wesley Larson, Bremerton, 2016  
Kathleen Peters, Bainbridge Island, 2014 • Arthur Schick, Poulsbo, 2016



# Port Gamble Bay Shoreline Conserved

We did it! On February 12, Kitsap County became the new owner of 535 acres of forestland and 1.5 miles of shoreline on Port Gamble Bay. This new county park is the first acquisition of the multi-year Kitsap Forest & Bay Project – an effort by Kitsap County, Port Gamble S’Klallam Tribe, Suquamish Tribe, Forterra, Great Peninsula Conservancy, and many community partners to conserve 6,700 acres of forest, waterfront, and trails owned by Pope Resources in north Kitsap County.



GPC's Executive Director Sandra Staples-Bortner and S'Klallam Tribal Chairman Jeromy Sullivan celebrate.

**KFBP partners share their excitement for this milestone land purchase below.**

Kitsap County Commissioner **Rob Gelder** noted the significance of the transaction, "This acquisition has been years in the making and is the beginning of a series of great things to come in 2014."

"One of my Tribe's ongoing priorities is to ensure that Port Gamble Bay remains productive and healthy for future generations. The conservation

The project area is one of the largest lowland forests and becomes one of the longest stretches of public shoreline in the Hood Canal watershed, offering important habitat for salmon and other wildlife. Conservation of these lands will link marine and freshwater habitats together for the protection of the entire watershed ecosystem. Kitsap County will manage the forest and shoreline to protect its natural heritage while providing open space for public enjoyment.

Port Gamble Bay is a culturally significant waterway for the Port Gamble S’Klallam people whose village once existed at the town of Port Gamble and is now located across the bay at Point Julia. The Suquamish Tribe also has strong cultural ties to the bay.

The area is heavily used by kayakers, bird watchers, mountain bikers, equestrians and hikers seeking year-round access to trails. Pope Resources has allowed public access for many years, generating an enthusiastic group of volunteers who maintain a vast trail network.

Funding for the \$4.6 million purchase came from Washington's Department of Ecology, National Coastal Wetlands Program, Washington Wildlife and Recreation Program, Washington State Aquatic Lands Enhancement Account, Port Gamble S’Klallam Tribe, and private donors.

of this property furthers that goal by protecting water quality, preventing development, and limiting storm water runoff and other associated impacts," said **Jeromy Sullivan**, Chairman of the Port Gamble S’Klallam Tribe.

"The Suquamish Tribe is grateful that this critical marine habitat will be protected for time immemorial and help protect the water quality of Port Gamble Bay," said Suquamish Tribal Chairman **Leonard Forsman**.

"Conservation of these lands will help sustain the cultural heritage and health of our communities, the functioning of our environment and diversity of our economy" said **Michelle Connor**, Forterra's Executive Vice President.

"We are proud to be working with the community to protect these forests, beaches and trails for future generations," said **Jon Rose**, President of Olympic Property Group, Pope Resources' wholly owned real estate subsidiary.

"The many community partners involved in the Kitsap Forest & Bay Coalition have dedicated countless hours to help achieve this historic land purchase – handing out trail maps, speaking to community groups and marching in parades," said **Sandra Staples-Bortner**, Executive Director of Great Peninsula Conservancy and Coalition Chair. "This is a big win for all our partners and for future generations."

## Port Gamble Bay Shoreline Celebration

You are invited to attend a celebration of the Port Gamble Bay Shoreline purchase. The event will include brief remarks, food, activities and camaraderie. Check the events page of [greatpeninsula.org](http://greatpeninsula.org) closer to the date for details.

**April 18, 4:30 pm to 6:30 pm**

Hood Canal Vista Pavilion  
4740 NE View Dr, Port Gamble



Forterra Vice President Michelle Connor, Jeromy Sullivan, Chairman of the Port Gamble S’Klallam Tribe, and Olympic Property Group's Jon Rose celebrate conservation success at WWRC Reception at the Governor's Mansion.

# Kitsap Forest & Bay Project: The



Photo Credit: Don Willott

*Red-breasted Sapsucker samples the riches of Grovers Creek.*

large swath of the Grovers Creek watershed. The project site is unique in habitat richness, species diversity, and extent of salmon-bearing main stem and tributary creek. As a wildlife corridor, the site connects with North Kitsap Heritage Park to the east and stretches west to connect with the Divide Block – a future project site.

The core of the 271-acre project has been under singular ownership by a timber company for more than a century, with its wetlands and old growth trees largely left intact due to limited access and forestry restrictions.

Within the wetland area, a rare, 45-acre, old-growth spruce/cedar/hemlock grove features numerous snags, decadent living trees with complex structures such as broken tops, and downed logs ranging widely in size and degree of decomposition. Small tributaries course through the grove, and hummocks and pools alternate throughout.

The resulting breaks in forest canopy allow a variety of understory plants to grow, with skunk cabbage and Pacific water-parsley in the wetter open areas, and salal, sword fern, red huckleberry, orchids and mosses on drier hummocks.

The site includes beaver ponds, peat bogs, freshwater wetlands and the Grovers Creek



Photo Credit: Joe Walsh

*Hiker investigates old growth western red*



Photo Credit: Randena Walsh

*Corralroot Orchid on Grovers Creek Project.*



# Hidden Riches of Grovers Creek

main stem and tributaries. Its diverse habitats support over 60 bird species, including owls and woodpeckers; host threatened steelhead and state-priority coho and cutthroat; and provide habitat for beaver, black bear, mink, otter and other wildlife such as western-red back salamander and red-legged frog. Someday a marbled murrelet, a small threatened seabird that lays its single egg high up in an old growth conifer, might lay claim to one of Grovers Creek ancient spruce trees.



Red-cedar on Grovers Creek Project.

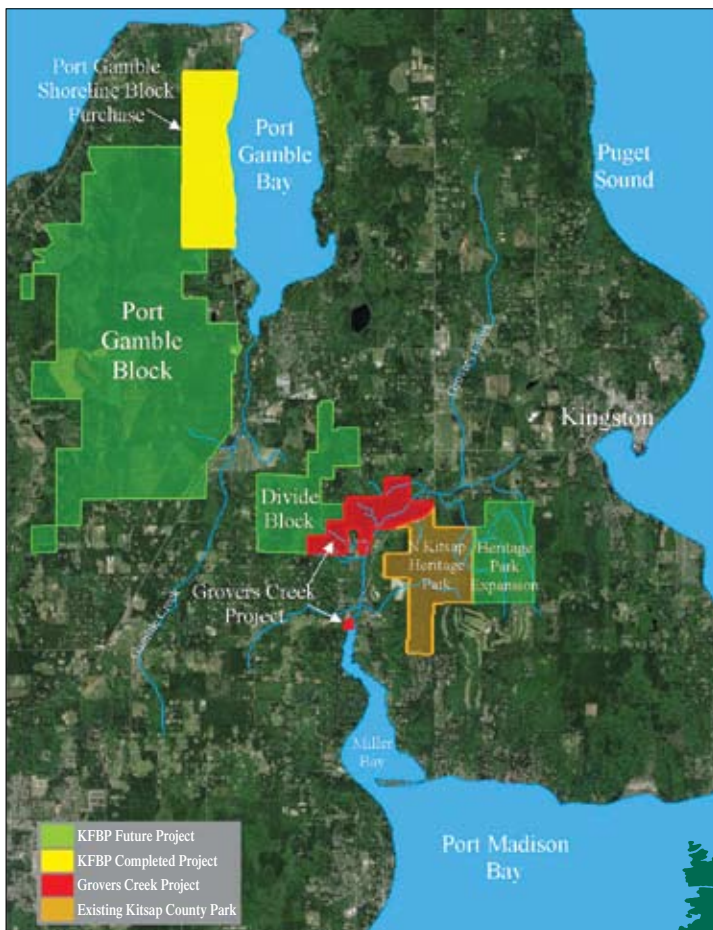
Only 1.1 miles downstream from this mosaic of habitats, Grovers Creek flows into Miller Bay, an estuary given highest priority for protection in a recent Puget Sound assessment. The Grovers Creek wetlands help protect the bay's water quality and ensure year-round flow. At the head of Miller Bay, a 3.4 acre conservation property recently donated to Great Peninsula Conservancy provides

further protection to the bay's rich tidelands.

The Grovers Creek project complements a protected wildlife corridor that soon will connect Carpenter Creek estuary near Kingston through North Kitsap Heritage Park to Grovers Creek. The vision of the Kitsap Forest & Bay Project is to extend permanent protection west into the Gamble Creek valley, then

north through the Port Gamble Block and the newly-conserved 535-acre Port Gamble Bay Shoreline Block to the village of Port Gamble and Hood Canal. This would conserve a significant open space corridor and provide an opportunity for a Sound to Olympics trail linking two major trails of statewide significance: the Olympic Discovery Trail in Clallam and Jefferson Counties, and the Cross State Trail that now links Seattle with the Montana border.

Beavers building dams, bears scrounging for berries and fish, woodpeckers probing for insects, young coho seeking refuge in side channels, and orchids peeking out of the understory while aged Sitka spruce and grand fir tower high overhead. These are the riches of Grovers Creek. Over the next two years, Great Peninsula Conservancy will be working with Kitsap Forest & Bay Project partners to provide permanent protection to this hidden wildlife sanctuary.



Map of KFBP and Grovers Creek Project.

Map Credit: Erik Pedersen

# Join Us for GPC Spring Dinner

## May 8

If you joined us last year, you'll remember the fabulous shellfish hors d'oeuvres and alder-plank roasted salmon. Join us again for a wonderful evening with GPC friends. Our 4th Annual Spring Dinner on Thursday, May 8 will once again be held at beautiful Kiana Lodge. Shellfish hors d'oeuvres, prepared by Taylor Shellfish Farm's fabulous chef Xinh of Xinh's Clam and Oyster House, will be followed by dinner, and the presentation of GPC's first ever Great Peninsula Conservation Award. This is an event you will not want to miss.

Brad Hanson, a leading ecologist with NOAA fisheries, will present the compelling story of our endangered Southern Resident Orcas. Dr. Hanson's research on these iconic whales is revealing some of the mysteries of killer whale behavior and highlights the importance of the Great Peninsula salmon runs to their survival.

Bring your friends and enjoy this delightful evening as a table sponsor. Table sponsors receive complimentary dinner and drink tickets for a table



Photo Credit: Sam D'Archangel

of eight. All proceeds from our fundraising dinner benefit Great Peninsula Conservancy's work to preserve natural habitats, rural landscapes and open spaces. Seating is limited. Last year's event sold out so get your tickets early! Tickets (\$100) include a one-year GPC membership; Tables (\$750) include a one-year GPC membership for your organization or business; Ticket deadline: April 24. Contact [mary@greatpeninsula.org](mailto:mary@greatpeninsula.org), or (360) 373-3500. See you there!



Photo Credit: Sam D'Archangel

### Lead Sponsors





# Welcome New Board Member



**Wes Larson Joins GPC's Board of Directors.** Great Peninsula Conservancy is pleased to welcome Wes Larson as a new member of its Board of Directors. Born and raised in Silverdale, Wes is president of Sound West Group and an attorney with over 25 years experience in international banking, asset management, and real estate acquisition and development. Wes has lived and worked in Seattle,

New York City, Tokyo and Vienna. He has taught environmental law as an adjunct professor at Seattle University and has been published in the Washington State Bar News on the subject of securitized real estate investments.

Wes and his wife, Daphne, now live next to GPC's 10-acre Big Beef Creek Salmon Sanctuary near Seabeck. Wes is an avid hiker with a great passion for the preservation of natural lands. He's been known to hike from his property down Big Beef Creek to Hood Canal. No easy feat!

## GPC is Applying for Accreditation

The land trust accreditation program recognizes land conservation organizations that meet national quality standards for protecting important natural places and working lands forever. A public comment period will open in mid-March.

The Land Trust Accreditation Commission invites public input and accepts signed, written comments on pending applications. Comments must relate to how Great Peninsula Conservancy complies with national quality standards. These standards address the ethical and technical operation of a land trust. For the full list of standards see <http://www.landtrustaccreditation.org/tips-and-tools/indicator-practices>.

To learn more about the accreditation program and to submit a comment, visit [www.landtrustaccreditation.org](http://www.landtrustaccreditation.org), or email your comment to [info@landtrustaccreditation.org](mailto:info@landtrustaccreditation.org). Comments may also be faxed or mailed to the Land Trust Accreditation Commission, Attn: Public Comments: (fax) 518-587-3183; (mail) 36 Phila Street, Suite 2, Saratoga Springs, NY 12866. Comments on Great Peninsula Conservancy's application will be most useful by May 31, 2014. Visit [www.greatpeninsula.org](http://www.greatpeninsula.org) for live links to view standards and submit comments.

## Memorial Gifts

(November 27, 2013 through February 15, 2014)

### **In memory of Lloyd Cleven**

Lawrence & LaVonne Greaves  
Merrill & Elizabeth Koster  
Dean & Lois Ottmar  
Selene Patterson  
Loren & Donna Saxby

### **In memory of Donna Pepos**

Janice Pettman

### **In memory of Ian Summers**

Phyllis Summers

### **In memory of Karen Zischke**

Jay Zischke

### **In memory of Virginia Cowling**

Virginia Spina

## Gifts to Honor

### **In honor of Annie**

James & Jane Chapin

### **In honor of Alison and Heather Barner**

Bruce & Tina Barner

### **In honor of Carson Wade Bortner**

Brad Bortner &  
Sandra Staples-Bortner

### **In honor of Jennifer & Greg Cleven**

Selene Patterson

### **In honor of Tex Lewis**

Evelyn Ghiselin  
Merwin & Diane Linsley  
Joyce Merkel

### **In honor of Larry Lither Family**

Deborah Gates

### **In honor of Bruce Macdonald**

Henry & Dorothy Wilson

### **In honor of Linda and Ed Marcuse**

Donald & Julie Marcuse

## GPC is on the Move!

We've outgrown our longtime office on Kitsap Way and will move as of March 1 to the Sound West Group Building in Downtown Bremerton.

"After a three-year search for a new office, Great Peninsula Conservancy is pleased to find a new home in this historic building in the heart of Bremerton," noted GPC Executive Director Sandra Staples-Bortner. "We were drawn to the downtown Bremerton location by the easy access to restaurants and the ferry – both bonuses for staff, and by the increased visibility the site offers for involving the public in our land conservation activities. Great Peninsula Conservancy's board of directors and staff are looking forward to being a part of the revitalization of Bremerton's central core. We very much appreciate Sound West Group's commitment to Bremerton and to advancing our conservation mission."

Come visit us at our new address: 423 Pacific Ave, Suite 401, Bremerton, WA 98337

Phone and email address remain the same: 360-373-3500 and [info@greatpeninsula.org](mailto:info@greatpeninsula.org)



# Great Peninsula Conservancy

423 Pacific Ave., Suite 401  
Bremerton, WA 98337

NON-PROFIT ORG.  
US POSTAGE  
SILVERDALE, WA  
PERMIT NO. 73

## GPC on Facebook

Great Peninsula Conservancy can be found on Facebook! We regularly post photos from the field, project updates, and news links on Facebook, so sign up and log in if you would like to receive up-to-date conservation news from the Great Peninsula. The best way to find us is to go to [www.greatpeninsula.org](http://www.greatpeninsula.org) and follow the Facebook link. *See you there!*



# GREAT PENINSULA CONSERVANCY



SAVE THE DATE  
**SPRING  
DINNER**

THURSDAY  
MAY 8, 2014